

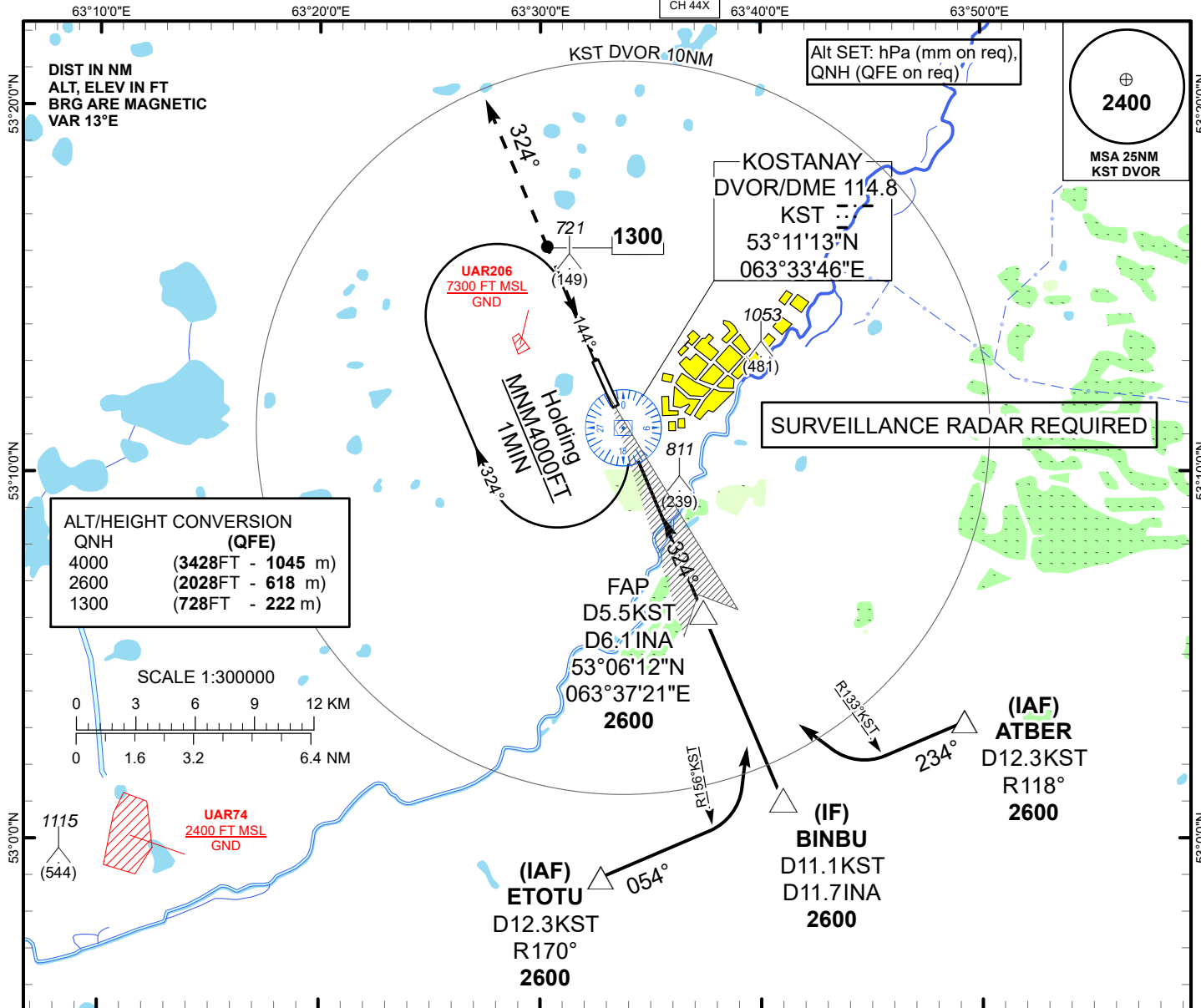
**INSTRUMENT APPROACH
CHART
ICAO**

AERODROME ELEV **601ft**
HEIGHTS RELATED TO
THR RWY 32 - ELEV **572ft**

ILS
LLZ 110.7
INA
GP 330.2
CH 44X

KOSTANAY TOWER 129.30
KOSTANAY ATIS (EN) 118.5
KOSTANAY ATIS (RU) 126.8

**KOSTANAY
ILS/DME
RWY 32**



MISSED APPROACH

Climb on track 324° to 2600FT.
After passing 1300FT radar
vectoring will be provided.

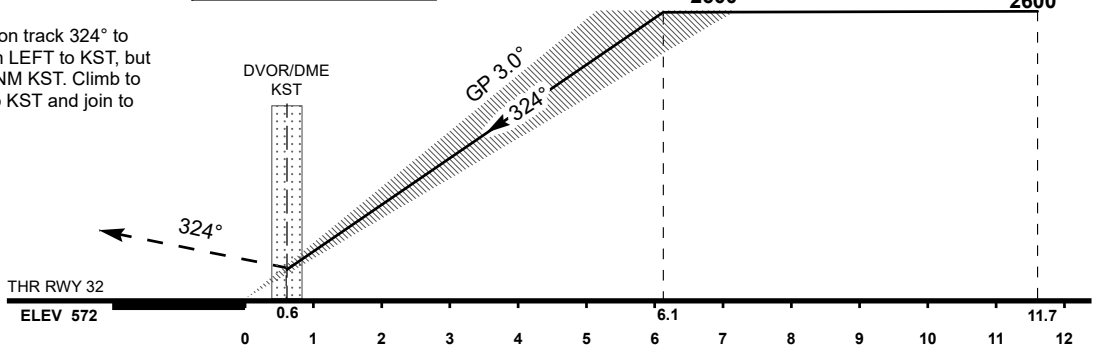
RADIO FAILURE:

In case of RCF climb on track 324° to
2000FT or above, turn LEFT to KST, but
not earlier than D5.0 NM KST. Climb to
4000FT (not below) to KST and join to
holding pattern

TRANSITION ALT
10000

FAP
D6.1 INA
D5.5 KST
2600

IF BINBU
D11.7 INA
D11.1 KST
2600



CHANGE: Missed approach description

Aircraft Category		A	B	C	D	DIST TO THR DME INA	NM	6.1	6	5	4	3	2	1
Straight-in Approach OCA/H						DME KST	NM	5.5	5.4	4.4	3.4	2.4	1.4	0.4
	ILS CAT I	772(200)	772(200)	782(210)	792(220)	ALTITUDE	FT	2600	2563	2235	1908	1584	1261	940
						HEIGHT	FT	2002	1991	1663	1336	1012	689	368
DME INA ZERO RANGED TO THR RWY 32														
Aerodrome Operating Minima DH ft x RVR(CMV)	ILS CAT I													
						GS	Kt	80	100	120	140	160	180	
						Desc.Rate(5.2%)	ft/min	420	530	630	740	850	960	

KOSTANAY
ILS/DME

AERONAUTICAL DATA TABULATION

ILS approach to RWY32 from BINBU, ATBER, ETOTU	
Fix/point	Coordinates
DVOR/DME KST	53° 11' 13.0"N 063° 33' 45.5"E
(FAP) D5.5 KST, D6.1 INA	53° 06' 11.9"N 063° 37' 21.2"E
BINBU (IF) D11.1 KST, D11.7 INA	53° 01' 04.8"N 063° 40' 57.2"E
ATBER (IAF) R118°, D12.3 KST	53° 03' 11.3"N 063° 49' 11.4"E
ETOTU (IAF) R170°, D12.3 KST	52° 58' 57.8"N 063° 32' 43.9"E
THR RWY 32	53° 11' 49.00"N 063° 33' 23.08"E
INA LOC	53° 13' 29.9"N 063° 32' 11.5"E